



Goswell Road update – to be inserted

---

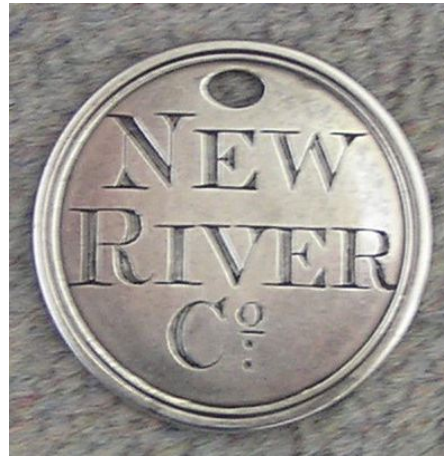
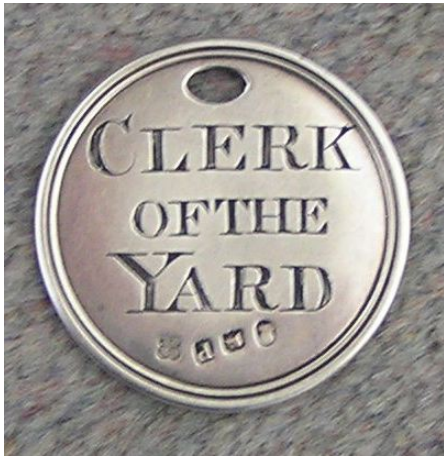
## Angel Area heritage walk

On April 13<sup>th</sup>, Angel Association committee member David Webb led one of his popular historical walks around our local area. David reports:

“The walk was well attended (in spite of the rain and cold). We started at the top of Duncan Street where we were able to see basic differences between houses of the 18th century compared with the 19th. Susan de Mont showed some illustrations of previous times including a 19th century sketch of men laying hard wood cobbles - some of which are still visible to-day!

We moved on towards Claremont Square. Here we saw the site of the "Fort Royal", built by Parliament during the English Civil War in the 1640's.

The rain had now stopped and we made our way across the New River Company's estate towards the "Yard" by the base of the 18th Century Windmill. David showed us two sides of a silver disc, hallmarked London 1810. This is thought to have been worn by the New River Company's "Clerk of the Yard".



Susan showed us an illustration of men bowling at Merlin's Cave - and we saw an interesting print looking up what was then called Islington Hill (modern day Rosebery Avenue) from Mount Pleasant towards "The Cave" and the 18th Century wall around the "River" buildings.

We came around The New River Head and then made our way back towards the Colebrooke Row gardens via Duncan Terrace following the course of the New River. The walk took about 2 hours and we still had most of the participants until very near the end !

---

**SAVE THE DATE.....**

Angel Association AGM – Tuesday July 22<sup>nd</sup>

St James' Hall, Prebend St, N1